

## Review

# Interactions between macrophages and brain microvascular endothelial cells: role in pathogenesis of HIV-1 infection and blood–brain barrier function

Hans SLM Nottet<sup>\*1</sup>

<sup>1</sup>*Eijkman-Winkler Institute of Microbiology, Infectious Diseases and Inflammation, section of Neuroimmunology, Utrecht University, Utrecht, The Netherlands*

Monocytes have been shown to infiltrate in brain tissue during various neurological disorders including AIDS dementia complex. The presence of an excess of activated macrophages in brain tissue is accompanied by tissue damage resulting in a loss in neuronal function and viability. Therapeutic options against such neurological disorders could therefore be aimed at the prevention of monocyte infiltration across the blood–brain barrier. Therefore, a better understanding of these processes is needed. Recent insights in cellular processes between monocytes/macrophages and brain microvascular endothelial cells in the neuropathogenesis of HIV-1 infection demonstrate that monocytes roll on endothelial cells via the inducible endothelial adhesion molecule E-selectin. Binding of these cells are mainly mediated via the endothelial adhesion molecule vascular cell adhesion molecule-1. The transmigration through the blood–brain barrier is facilitated by both endothelial and monocyte/macrophage-derived nitric oxide and by the increased production of gelatinase B activity by HIV-infected monocytes/macrophages. Chemokines produced within the brain regulate the traffic of the infiltrating monocytes through the brain parenchyma. In addition, endothelial cells also produce monocyte attracting chemokines during their first interactions with HIV-infected monocytes/macrophages thus promoting additional influx of phagocytes into the brain. Furthermore, excessive infiltration of monocytes is accompanied by endothelial damage resulting in the loss of tight junctions. Thus, in toto, brain microvascular endothelial cells might contribute to the neuropathogenesis of HIV-1 infection.

**Keywords:** macrophages; blood–brain barrier; endothelial cells; HIV-1

## Introduction

The brain can be viewed as an intensive network of cellular interactions between neurons, astrocytes, oligodendroglia and microvascular endothelial cells. The task of these cells are well defined in this network and are aimed at the creation and maintenance of optimal neuronal functioning. The neurons in the brain coordinate complex human processes such as learning and memory, behavior, language, and movement. Oligodendroglia produce the myelin sheet that is surrounding the axons of

the neurons and thereby allowing electrical signaling between and within the neurons. Astrocytes create and maintain the extracellular milieu that is needed for optimal neuronal functioning, occupy lost space in the CNS after neuronal death, and, in contrast to other brain cells, even signal to neurons (Norenberg, 1994; Nedergaard, 1994; Parpura *et al*, 1994). Brain microvascular endothelial cells (BMEC) are the major component of the blood–brain barrier (BBB) and thus contribute to the maintenance of a stable extracellular milieu for the neurons. Microglia, the resident brain macrophages, form the defence against infectious diseases and remove dead neurons. Brain cells have a neuroectodermal origin, with the exception of microglia. Although the latter is still a matter of

<sup>\*</sup>Correspondence: HSLM Nottet, Eijkman-Winkler Institute, AZU, hp GO4.614 Heidelberglaan 100 NL-3584 CX Utrecht, The Netherlands

Received 31 March 1999; revised 21 June 1999; accepted 1 July 1999

debate, the majority of studies suggest that microglia are derived from blood monocytes (Ling and Wong, 1993).

Whether or not monocytes are the precursor cells for microglia, an excess of infiltrating monocytes into the central nervous system (CNS) seems in the long term not beneficial for the brain. For instance, monocytes and/or macrophages play a pathological role in stroke, trauma and neurological diseases such as multiple sclerosis (Li *et al*, 1993), Parkinson's disease (McGeer *et al*, 1988a), Huntington's disease (McGeer *et al*, 1988b), Creutzfeldt-Jakob disease (Muhleisen *et al*, 1995) and AIDS dementia complex (Nottet and Gendelman, 1995a). In addition, microglial activation very likely also contributes to the neurological manifestations of Alzheimer's disease (Smits *et al*, 1999; van Muiswinkel *et al*, 1999). For these reasons, it is important to understand the cellular processes that underlie the mechanisms of monocyte trafficking into the CNS during physiological and especially during pathophysiological circumstances. This review will be focused on mechanisms of monocyte infiltration in AIDS dementia complex.

AIDS dementia complex is the most severe neurological manifestation of HIV infection of the brain. In the era before treatment with anti-HIV compounds 30% of the adults with AIDS and 50% of the pediatric AIDS cases were affected by HIV-induced neurological complications in the Western world. Interestingly, in the adult brain HIV only productively replicates in macrophages/microglia and not in neurons, astrocytes, oligodendrocytes and BMEC (Koenig *et al*, 1986; Wiley *et al*, 1986; Vazeux *et al*, 1987). Neuropathological features of HIV-1 encephalitis include productive HIV-1 infection of brain cells of monocyte/macrophage lineage, multinucleated giant cell formation, macrophage infiltration of the CNS, astrogliosis, and myelin pallor. Some neurons undergo dendritic pruning, simplification of synaptic contacts, and frank cell loss (Masliah *et al*, 1992). These neuronal changes are clinically manifested by cognitive and motor dysfunctions that affect many individuals with AIDS. The finding that neurological symptoms are a consequence of dendritic injury and synaptic loss (Masliah *et al*, 1997), and occur in absence of neuronal cell loss (Seilhean *et al*, 1993), suggest that treatment may retard the onset of cognitive and motor defects.

## The blood-brain barrier

### *Characteristics of the blood-brain barrier*

The BBB prevents the free diffusion of circulating molecules and cells into brain interstitial space. Electron microscopic studies show that the cardinal morphologic feature of the barrier is the presence of epithelial-like, high-resistance tight junctions that fuse brain capillary endothelia together into a

continuous cellular layer separating blood and brain interstitial space (Pardridge, 1983). These junctions are quite tightly sealed, and therefore exchange between blood plasma and brain must pass through the two membranes and the cell cytoplasm of the brain endothelium. A scarcity of fenestrations and vesicular traffic in brain capillary endothelia furthermore restricts free flow between brain interstitium and blood.

The functional existence of a BBB is demonstrated by the restricted movement of ions from the blood to brain, the limited ability of macromolecules and polar organic molecules to cross the barrier, and the presence of very high electrical resistance across brain microvessels (Pardridge, 1983). In contrast, molecules smaller than about 30 kd cross capillaries in nonneural tissues freely. Rather than being determined solely by molecular size, their migration through the BBB is highly dependent on their chemical characteristics. Despite the barrier created by the continuous tight junctions and very low rate of pinocytosis of the endothelial cells, certain polar molecules rapidly cross the papillary wall. Indeed, the BBB has several saturable transport systems that present the brain with nutrients at a relative constant rate in the presence of shifting blood plasma levels (Goldstein and Betz, 1983). Movement of D-glucose, in contrast to L-glucose, and the essential large neutral L-amino acids are mediated by such carrier-mediated processes. Specific transport systems that mediate the sequential endocytosis at the luminal border of the barrier and exocytosis at the abluminal border have also been reported (Pardridge *et al*, 1985). In addition, unidirectional transport across the BBB takes place due to asymmetric distribution of membrane-bound carriers. Furthermore, substrate conversing actions of cytoplasmic enzymes regulate entry into the brain interstitium. For instance, the alanine transporter has a polarized distribution with preferential localization to the abluminal surface (Betz and Goldstein, 1987). Thus, although the term 'blood-brain barrier' implies a general impermeability, the barrier is best considered as selectively permeable. It optimizes the brain interstitial space as an ultrastable subcompartment of the general extracellular fluid, thus creating a neuronal environment that allows optimal brain function.

### *Formation of the blood-brain barrier characteristics*

The functional difference between brain capillary endothelia and capillary endothelia in other organs is likely orchestrated by factors secreted by the brain itself. The vasculature of the brain is derived from non-barrier vessels of mesodermal origin. Soon after these vessels come in contact with neural tissue their phenotype changes and as the development of the brain progresses, the vessels begin to express BBB characteristics (Stewart and

Wiley, 1981). The sharing of the abluminal basement membrane between brain endothelium and astrocytes or their foot processes (or both) in the mature brain suggest that astrocytes play an important role in the induction and/or maintenance of the BBB. Indeed, the extensive tight junctions characteristic of the BBB are lost with increasing passages of these endothelial cells in culture but are rapidly restored on exposure of the cells to media conditioned by primary astrocytes (Arthur *et al*, 1987). Similarly, capillaries of non-neural origin become highly impermeable and exhibit extensive tight junctions after exposure to cultured astrocytes (Janzer and Raff, 1987). Other important barrier features in endothelial cells that are induced or maintained by astrocytes include the increased expression and/or polarized distribution of enzymes and transport systems (DeBault and Cancilla, 1980). In addition to endothelial damage, malfunctioning of astrocytes during disease can, therefore, also result in loss of BBB characteristics and create an imbalance in the homeostatic microenvironment for neurons.

#### *Mononuclear phagocyte traffic across the blood–brain barrier*

The BBB is present during embryogenesis in the mouse, but is more permeable to solutes than during the postnatal period. Shortly after birth, there is a very rapid maturation of the junctions, such that they attain their adult characteristics (Perry *et al*, 1997). It has been shown that monocytes can enter the developing brain not only when the BBB is immature, but also during this early postnatal period. The use of rat bone-marrow chimeras has served as a tool to study the relative rates of replacement and turnover of the different macrophage populations of the brain. In rats, the macrophages in the meninges and the perivascular macrophages have a relatively rapid turnover, while the microglial population is maintained by local division as well as by influx of circulating monocytes (Hickey *et al*, 1992; Lawson *et al*, 1992). These experiments show that only a small number of microglia are derived from the bone marrow over a period of several months, suggesting that the BBB plays a significant role in regulating their turnover and traffic. However, during the same period, large numbers of perivascular macrophages are donor derived, indicating that the BBB is not a major impediment to mononuclear phagocyte traffic (Perry *et al*, 1997). Although it is in general known that leucocytes first roll on the vessel wall, followed by their firm adhesion and diapedesis, little is known about the molecular mechanisms that support leukocyte traffic across the BBB as part of normal physiology. However, molecular mechanisms that allow excessive macrophage infiltration into the brain during the pathophysiological response to HIV-1 infection have been studied in detail.

## **The blood–brain barrier during HIV-1 infection**

### *HIV-1 infection of the brain*

HIV-1 is a haematogenously spread virus that most likely gains entry into the brain within blood-derived macrophages (Nottet and Gendelman, 1995a). Indeed, HIV-1 is selectively localized within perivascular and infiltrated parenchymal blood-derived macrophages and microglia (Koenig *et al*, 1986; Wiley *et al*, 1986; Vazeux *et al*, 1987). Axonal spread of HIV as a mechanism to enter the CNS is ruled out, since direct neuronal infection has not been demonstrated in pathologic specimens of AIDS patients with HIV-1 encephalitis. Theoretically, cell-free HIV might infect brain microvascular endothelial cells and subsequent release of virus at the abluminal membrane of the BBB would result in early HIV entry into the brain parenchyma. Although direct *in-vitro* infection of brain endothelium by lymphotropic HIV-1 has been described, the relevance of that finding remains questionable (Moses *et al*, 1993). First, macrophagetropic HIV-1 is the predominant viral phenotype isolated during the acute seroconversion reaction, thus excluding a role for lymphotropic HIV-1 in early CNS infiltration (Zhu *et al*, 1993). Second, brain-derived viral strains are macrophagetropic rather than lymphotropic (Sharpless *et al*, 1992; Korber *et al*, 1994). Third, there is no *in-vivo* evidence for HIV infection of brain endothelial cells (Koenig *et al*, 1986; Wiley *et al*, 1986; Vazeux *et al*, 1987). In addition, several other investigators could find no *in-vitro* evidence for permissiveness of these cells to either lymphotropic or macrophagetropic HIV-1 (Gilles *et al*, 1995; Poland *et al*, 1995; Nottet *et al*, 1996). These findings and the ample evidence that only blood-derived macrophages and microglia support productive viral replication within the CNS suggest that HIV-1 gains entry into the brain within macrophages (Nottet and Dhawan, 1998).

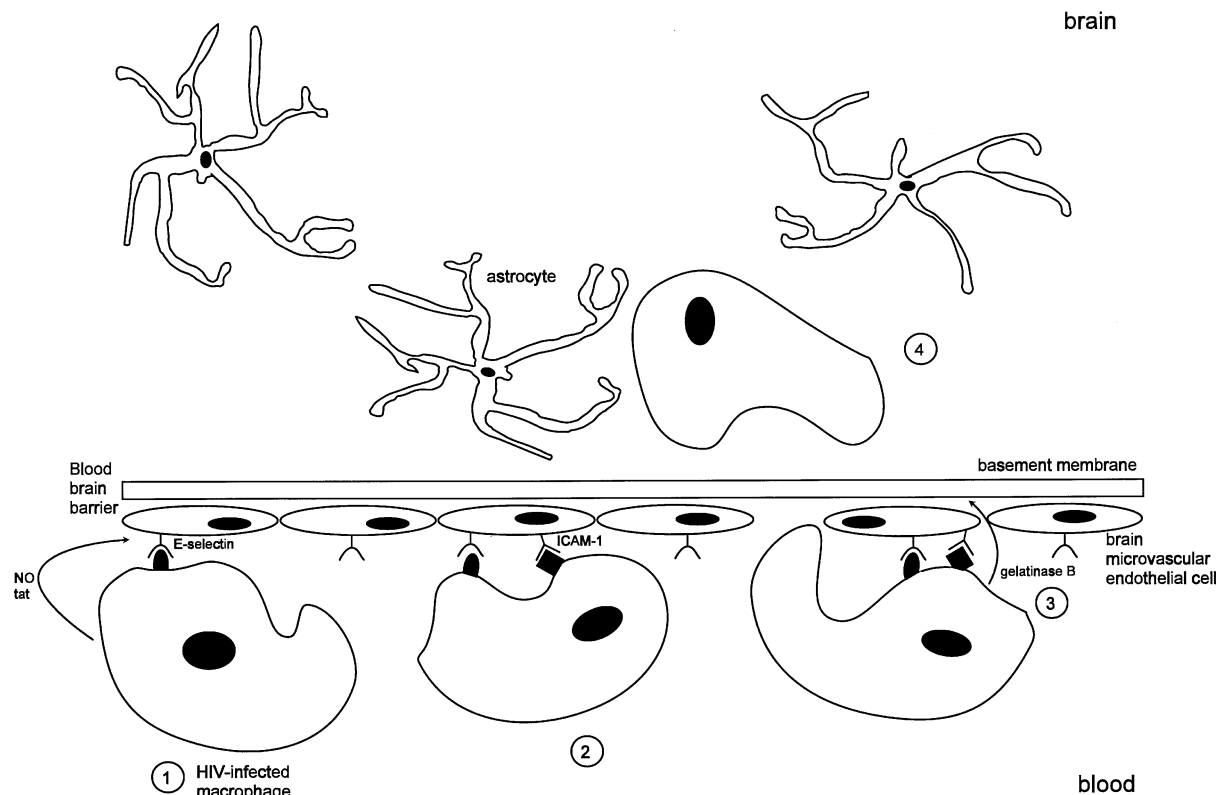
The occurrence of aseptic meningitis during the acute seroconversion reaction in HIV-infected individuals provides clinical support for the haematogenously spread of HIV-1 to the CNS (Hollander and Stringari, 1987). Detection of virus and anti-HIV antibodies in CSF of individuals during acute HIV-1 infection suggest that early viral penetration of the CNS might underlie this neurologic complication (Ho *et al*, 1985; Goudsmit *et al*, 1986). That early entry might also involve the brain parenchyma is supported anecdotally (Davis *et al*, 1992). A case was reported on an individual who was mistakenly injected with HIV-1-infected white blood cells and in whom infected cells were identified in *post-mortem* brain days later (Davis *et al*, 1992). In addition, studies of the time course of simian immunodeficiency virus infection indicate that virus enters the brain early in the course of disease (Chakrabarti *et al*, 1991; Sharer *et al*, 1991).

Despite this early viral invasion of the CNS, neurologic manifestations of cognitive and motor impairment occur relatively late in disease. The latter might be indicative of suppressive factors, for instance produced by astrocytes (Nottet *et al*, 1995b), endogenously present within the CNS that either prevents rapid spread of HIV through the CNS and/or prevents neurotoxin formation by HIV-infected macrophages (Nottet *et al*, 1997). In addition, a unique subset of monocytes in demented AIDS patients as compared to non-demented AIDS patients has been described (Pulliam *et al*, 1997). Supernatants from these cells were found to be toxic for human brain cells. These cells might enter the brain during the later stages of HIV-1 infection, expose neural cells to toxic factors, and cause dementia (Pulliam *et al*, 1997).

#### Mechanisms of early brain infiltration by HIV-infected macrophages

As mentioned before, the first step in the transmigration of leukocytes into tissue involves the rolling on the blood vessel wall. This rolling is mediated by the inducible endothelial adhesion molecule E-

selectin and by sialylated and sulfated lactosamine oligosaccharides that are present on monocytes (Varki, 1994). Importantly, *in-vitro* HIV-infected monocytes/macrophages (M/M) induce E-selectin expression on BMEC thereby thus facilitating the rolling of these virus-infected cells on brain endothelium. In addition, the expression of endothelial E-selectin in brain tissue of demented AIDS patients was dramatically increased as compared to non-demented AIDS patients (Nottet *et al*, 1996). Since recombinant tat induces E-selectin expression on other endothelial cells, the induction of this adhesion molecule is most likely mediated by the HIV-1 tat molecule that is secreted by HIV-infected M/M (Hofman *et al*, 1993). Furthermore, HIV-1 infection of M/M induces the production of low levels of nitric oxide (NO), a potent vasoactive molecule (Bukrinsky *et al*, 1995; Boven *et al*, 1999a). Since NO can slow down the speed of blood cells through the blood vessel the change that rolling on endothelium via E-selectin might increase (Figure 1). Furthermore, treatment of monocytes with tat protein increased their adhesion to endothelial cell monolayers, and adhesion was



**Figure 1** Mechanisms for early entry into brain. (1) HIV-infected monocytes/macrophages (M/M) selectively induce endothelial expression of E-selectin, most likely by a tat-dependent mechanism, that mediates their rolling on brain endothelium. The change that these cells indeed roll on brain endothelium via E-selectin might increase due to the secretion of NO, a potent vasodilator, by HIV-infected macrophages. (2) Their binding is mediated via ICAM-1 molecules on the BMEC. (3) In addition, HIV-induced gelatinase B activity results in degradation of abluminal extracellular matrix proteins. (4) These molecular events eventually allow M/M infiltration into the brain.

inhibited by inclusion of anti- $\beta 2$  and anti-ICAM-1 antibodies (Lafrenie *et al*, 1996). The HIV-induced upregulation of adhesive receptors was associated with enhanced binding of monocytes to brain endothelium (Dhawan *et al*, 1992). These findings suggest that HIV-infected M/M, in addition to an advantage in rolling on the blood vessel wall, have also an advantage in the subsequent step in the process of extravasation into the brain, namely the binding to brain endothelium (Figure 1). Furthermore, HIV-infected M/M also produce higher levels of gelatinase B as compared to uninfected M/M. These cells therefore have an advantage in the process of diapedesis since gelatinase B degrades the extracellular matrix proteins that underlie the endothelial cell monolayer and in such a way increases the permeability of the BBB (Dhawan *et al*, 1992).

These HIV-induced alterations in M/M effector functions might underlie the early viral penetration of the CNS during the acute HIV-1 infection (Figure 1) and explain how HIV-infected macrophages can serve as viral reservoirs inside tissue compartments (Gendelman *et al*, 1989). Although the early transmigration of HIV-infected M/M into the CNS might result in meningitis, the occurrence of severe neurological symptoms including dementia occurs relatively late. In these stages the immune system is deteriorated and activated and as a consequence the mechanisms involved in the brain infiltration by HIV-infected M/M are much more complex as outlined hereafter.

### The blood–brain barrier during AIDS dementia complex

#### *Rolling and binding of HIV-infected macrophages*

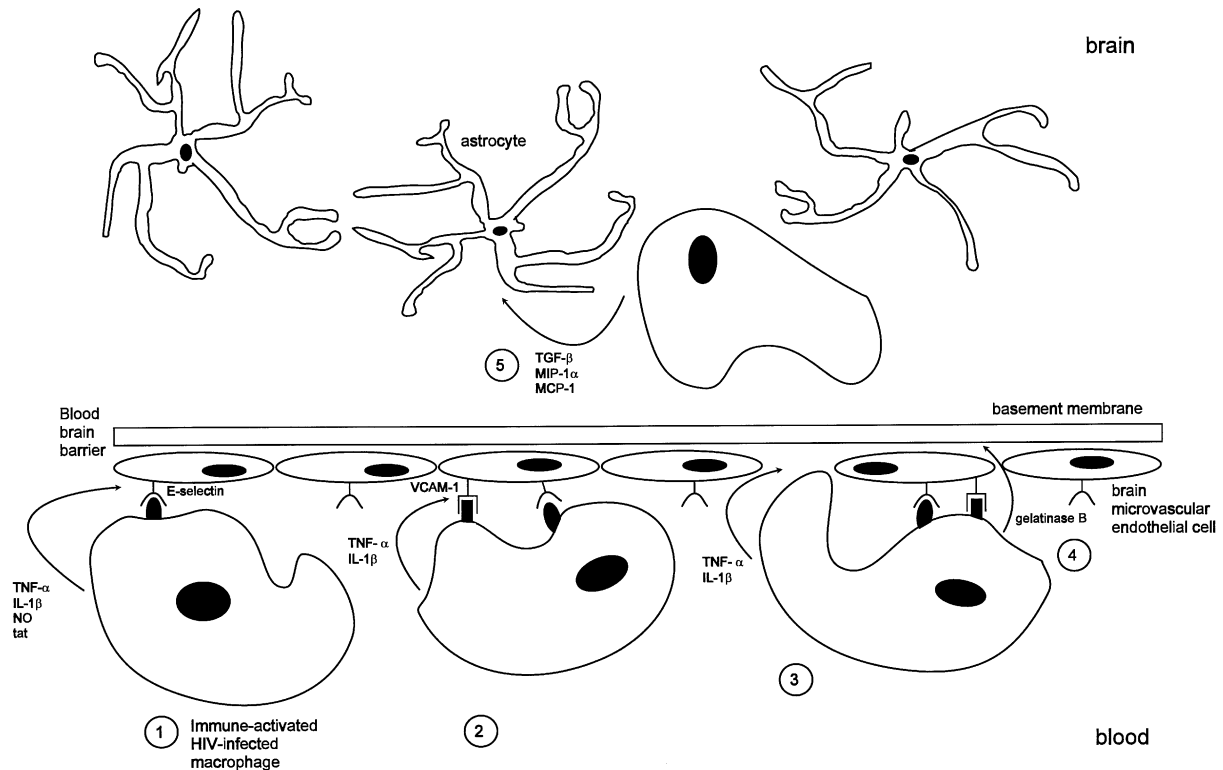
During the later symptomatic stages of HIV-1 infection elevated levels of proinflammatory cytokines such as tumor necrosis factor- $\alpha$  (TNF- $\alpha$ ) and interleukin-1 $\beta$  (IL-1 $\beta$ ) have been detected in serum of AIDS patients and in macrophages isolated from HIV-infected individuals (Lahdevirta *et al*, 1988; Buhl *et al*, 1993). Both cytokines are mediators of meningitis and regulate BBB permeability in a reversible manner. Indeed, intracisternal injection of TNF- $\alpha$  and IL-1 $\beta$  into rats increased BBB permeability for systemically administered radioactive tracers (Quagliarello *et al*, 1991). In addition, these cytokines induce the expression of endothelial adhesion molecules that facilitate rolling and binding of leukocytes. Indeed, activated HIV-infected M/M induce the highest levels of E-selectin and vascular cell adhesion molecule-1 (VCAM-1) on brain microvascular endothelial cells (Nottet *et al*, 1996) as compared to unactivated HIV-infected cells and activated uninfected M/M. Since E-selectin mediates rolling and VCAM-1 mediates binding of leukocytes to endothelium, HIV-infected cells have an advantage in these processes when

compared to normal M/M (Figure 2). The *in-vitro* studies are supported by the observation that endothelial expression of E-selectin, and to a lesser degree VCAM-1, was the highest in brain tissue of demented AIDS patients when compared to non-demented AIDS patients. In addition, monocyte binding to encephalitic brain could be prevented by blocking monoclonal antibodies directed against both adhesion molecules (Nottet *et al*, 1996). Cocultivation of HIV-infected M/M with BMEC resulted in an increased permeability of the endothelium, measured as  $^{125}\text{I}$ -albumin passage through endothelial cell monolayers in transwell systems (Dhawan *et al*, 1995). In addition, immune-activated M/M placed on BMEC cultured on the upper chamber of a transwell migrated in larger numbers through the artificial BBB than unactivated cells (Persidsky *et al*, 1997).

#### *Transmigration through the blood–brain barrier*

However, besides these subtle changes between M/M and endothelial cells there is also evidence of endothelial damage that might underlie the excessive monocyte infiltration into the brain and even contribute to the severe stages of AIDS dementia complex. For instance, *in-vitro* HIV-1 infection of M/M resulted in superoxide anion production (Boven *et al*, 1999a) and endothelial NO synthase was induced in cocultures of M/M and endothelial cells (Boven *et al*, unpublished data). Since superoxide anion and NO form the highly toxic molecule peroxynitrite, immunohistochemical staining for nitrotyrosine, the footprint of peroxynitrite, was performed and showed extensive immunoreactivity in perivascular areas of brain tissue of demented AIDS patients. Furthermore, the architecture of many blood vessels was damaged as shown by immunohistochemical staining for zonula occludens-1, a tight junction protein (Boven *et al*, submitted). Thus, during the intimate contact with HIV-infected M/M endothelial cells may contribute to their own damage by the production of NO. These findings might explain the increased permeability of artificial BBB for radioactive albumin when put in contact with HIV-infected M/M (Dhawan *et al*, 1995).

After their migration through the endothelial cell layer, the monocytes will encounter the basement membrane that surrounds the albuminal side of the BBB. As described above, the capacity of HIV-infected M/M to digest and invade basement membrane gel matrix was significantly greater than that of uninfected control cells. Interestingly, incubation of HIV-infected M/M with tissue inhibitor of metalloproteinase-1 (TIMP-1) and TIMP-2 partially inhibited the increased permeability of endothelial cell monolayers to  $^{125}\text{I}$ -albumin. These proteinase inhibitors antagonize the effects of matrix metalloproteinases, such as the HIV-induced gelatinase B activity (Dhawan *et al*, 1992). Im-



**Figure 2** Mechanisms for HIV-1 entry into brain during neurologic disease. (1) During the later symptomatic stages of HIV-1 infection elevated levels of proinflammatory cytokines such as  $\text{TNF-}\alpha$  and  $\text{IL-1}\beta$  are secreted by perivascular HIV-1-infected M/M. Both  $\text{TNF-}\alpha$ ,  $\text{IL-1}\beta$  and HIV-1 tat induce the expression of E-selectin on BMEC. The change that these cells indeed roll on brain endothelium via E-selectin might increase due to the secretion of NO, a potent vasodilator, by HIV-infected macrophages. E-selectin then mediates rolling of HIV-infected M/M on the vessel wall. (2)  $\text{TNF-}\alpha$  and  $\text{IL-1}\beta$  also induce the expression of VCAM-1 on BMEC. The induction of this adhesion molecule allows binding of HIV-infected M/M to brain endothelium. (3) The overexpression of the proinflammatory mediators  $\text{TNF-}\alpha$  and  $\text{IL-1}\beta$ , by HIV-infected M/M will result in an increase in blood–brain barrier (BBB) permeability. (4) The overexpression of gelatinase B by HIV-infected M/M will result in degradation of abluminal extracellular matrix proteins. All these factors will lead to the transmigration of HIV-infected M/M across the BBB. (5) Intercellular interactions between astrocytes and infiltrated HIV-infected M/M within the brain parenchyma will result in the induction of several chemokines,  $\text{TGF-}\beta$ ,  $\text{MIP-1}\alpha$  and  $\text{MCP-1}$ . These chemokines will attract more HIV-infected and uninfected M/M into the brain parenchyma resulting in an expansion of the viral load within the CNS.

Importantly, matrix metalloproteinase-9 activity in the cerebrospinal fluid of HIV-infected patients was significantly higher in patients with neurological deficits than in patients without neurological deficits (Sporer *et al.*, 1998). This finding suggests that, in addition to the effects of HIV-infected M/M on endothelial cells, interactions between HIV-infected M/M and the extracellular matrix also affect BBB permeability (Figure 2).

#### Migration through the brain parenchyma

The distribution of infected macrophages in brain is archetypal, with viral predilection for cerebral white matter, deep gray matter (basal ganglia and thalamus), and the brainstem. Although the exact mechanisms that underlie this distribution remain unknown, temporal expression of adhesion molecules and chemokines in the brain has been suggested to guide specific trafficking of HIV-infected M/M to these brain areas (Nottet *et al.*, 1997). In any event, chemoattractants have been

detected in brain tissue of AIDS patients with HIV-1 encephalitis, and might, therefore, play a role both in infiltration and subsequent migration of HIV-infected M/M into brain. For instance, transforming growth factor- $\beta$  ( $\text{TGF-}\beta$ ), a cytokine that induces the migration of monocytes at femtomolar concentrations, was clearly identified within AIDS brain tissues in association with macrophages and astrocytes, but not in control brain tissue (Wahl *et al.*, 1991). More recently, the expression of the  $\beta$  chemokine peptides macrophage inflammatory protein-1 ( $\text{MIP-1}\alpha$ ) and  $\text{MIP-1}\beta$  was found to be elevated in brain tissue of demented AIDS patients as compared to non-demented AIDS patients (Schmidtayerova *et al.*, 1996; Sanders *et al.*, 1998). Cells expressing these chemokines were identified morphologically as brain macrophages and astrocytes. Interestingly,  $\text{MIP-1}\beta$  levels were much more prevalent than the  $\text{MIP-1}\alpha$  levels (Schmidtayerova *et al.*, 1996; Sanders *et al.*, 1998). Since the monocyte chemotactic activity of

MIP-1 $\alpha$  is much more potent than that of MIP-1 $\beta$ , the elevated levels of MIP-1 $\alpha$  in HIV-infected brain tissue might result in further monocyte infiltration of brain tissue and subsequent spread of viral CNS infection. In addition, monocyte chemoattractant protein-1 (MCP-1), another chemokine with relatively selective chemoattractant properties for monocytes, was found to be elevated in astrocytes in brain tissue of demented AIDS patients (Conant *et al*, 1998; Sanders *et al*, 1998 (Figure 2)). Indeed, using a coculture of human endothelial cells and astrocytes to model the BBB, it was recently demonstrated that astrocyte derived MCP-1 directs the transmigration of monocytes (Weiss *et al*, 1998). And, finally, microglial expression of RANTES was found to be elevated in brain tissue of demented AIDS patients as compared to non-demented AIDS patients (Sanders *et al*, 1998).

Interestingly, endothelial cells themselves might also play a role in the recruitment of monocytes into the CNS by the production of chemokines. For instance, these cells elicit the production of several chemokines by uninfected as well as HIV-infected M/M (Boven *et al*, submitted). The levels produced by the HIV-infected cocultures are significantly higher than the levels produced by the uninfected cocultures. Importantly, endothelial expression of MCP-1 was readily detected in brain tissue of AIDS patients with AIDS dementia complex when compared to tissue of non-demented AIDS patients (Boven *et al*, submitted).

## Treatment modalities for ADC

### *Anti-retroviral therapy*

Several *in-vitro* studies have shown that antiretroviral drugs targeted at HIV-1 reverse transcriptase can prevent viral infection of macrophages (Perno *et al*, 1992). However, the effectiveness of these drugs to inhibit viral replication in macrophages *in vivo* might be hampered by the localization of these cells in the CNS and the emergence of drug-resistant viral strains. For instance, zidovudine, in sufficient doses, can produce clinical improvement in mental function, at least transiently, for weeks to months following its administration (Sidtis *et al*, 1993). However, didanosine does not reduce the incidence of neurological impairments among adult AIDS patients (Portegies *et al*, 1994), presumably because it does not enter the CNS (Balis *et al*, 1992). However, despite relatively poor CNS penetration, didanosine has been shown to be beneficial in children with neurological dysfunction (Butler *et al*, 1991). Besides, antiretroviral monotherapy has resulted in the emergence of resistant HIV-1, in some cases even after 3 weeks of therapy (Wei *et al*, 1995). Current and ongoing highly active antiretroviral therapy (HAART) drug studies show that the viral load in plasma of HIV-infected individuals can be decreased to very low and even undetectable

levels, resulting in an increased expected life time after HIV-1 infection. However, if one or more of these drugs does not enter the CNS the incidence of HIV-associated cognitive/motor complex might increase among HIV-infected individuals. The latter should be taken seriously as illustrated by a recent study that showed that the HIV-1 protease inhibitors ritonavir, saquinavir, and indinavir, are substrates of the human multidrug transporter (or P glycoprotein) that is present in large quantities of BMEC (Lee *et al*, 1998). Indeed, studies using knockout mice deficient for this transporter molecule revealed that P glycoprotein limits the oral bioavailability and penetration of this class of anti-HIV drugs (Kim *et al*, 1998). Since protease inhibitors are part of all new triple anti-HIV therapy treatment regimens these data suggest that at least one of the drugs will poorly penetrate into the brain and therefore limit therapeutic efficacy in CNS infection.

### *Anti-inflammatory treatment*

Therapeutic strategies aimed at preventing CNS dysfunction might be an effective adjunct for future therapy. The use of factors that promote neuronal survival, such as nerve growth factor, as suggested for Alzheimer's disease is most likely not the way to go as the endogenous production of these factors have been found to be elevated in brain tissue of demented AIDS patients (Soontornniyomkij *et al*, 1998; Boven *et al*, 1999b). Instead, these strategies should be directed against the instigator of HIV-induced neurological disease, the macrophage/microglia. To reach these goals one should prevent immune activation of these cells and prevent excessive monocyte infiltration of the brain. As discussed in the introduction, macrophage activation occurs in a variety of neurological disorders including Alzheimer's disease. Importantly, clinical and epidemiological studies not only argue for a detrimental role of inflammatory processes in the pathogenesis of Alzheimer's disease but also illustrate that anti-inflammatory drugs might retard the onset of this neurological disease (Rogers *et al*, 1993; Breitner *et al*, 1995; Breitner, 1996). This holds tremendous potential for the development and clinical use of drugs that are specifically targeted against individual or classes of HIV-induced macrophage-derived neurotoxins. Indeed, a recent study reported on the successful treatment of HIV-associated dementia using a combination of HAART and ibuprofen in a HIV-infected individual (Gendelman *et al*, 1998). In addition, treatment with anti-oxidants such as vitamin E, as has been suggested for Alzheimer's disease, might be worth pursuing since markers indicative of oxidative stress have very recently been detected in brain tissue of demented AIDS patients (Bukrinsky *et al*, 1995; Boven *et al*, 1999a). Indeed, a small clinical trial with a lipophilic antioxidant that acts to

scavenge superoxide anion radicals has recently been conducted in demented AIDS patients resulting in trends toward improvement in the cognitive tests scores (Kiebertz *et al*, 1997). As discussed above, endothelial and astrocytic MCP-1 expression mediate brain monocyte infiltration in other CNS disorders (Takeshima *et al*, 1994; Sato *et al*, 1995; Kim *et al*, 1995). Since high-dose methylprednisolone treatment reduced both endothelial MCP-1 expression and monocyte infiltration in the ischemic brain (Kim *et al*, 1995), and since abundant endothelial MCP-1 expression has been detected in cocultures of HIV-infected M/M and BMEC and in brain tissue of demented AIDS patients (Boven *et al*, unpublished data), such treatment might make sense in the context of AIDS dementia complex. Although clinical trials with the steroid prednisone are being conducted in Alzheimer patients, a recent study with the steroid dexamethasone in an animal model for HIV-1 encephalitis showed adverse effects of steroid treatment (Limoges *et al*, 1997).

## Conclusions

HIV-1 enters the brain in a hematogenously fashion early during HIV-1 infection. It gains entry via the 'Trojan horse' model by modulating both monocyte/macrophage and endothelial functions. HIV takes advantage of cellular machineries in-

involved in rolling and binding processes between both cells and also increases the ability for monocytes to transmigrate into the CNS. Clinical signs are aseptic meningitis but these signs disappear soon after seroconversion. Apparently the brain is able to limit extensive HIV-1 replication within the CNS or is able to suppress inflammatory processes. However, when the immune system is deteriorated, neurological complications start to occur and will eventually lead to dementia. During these events macrophages are immune-activated leading to enhanced production of molecules that increase BBB permeability, endothelial adhesion molecules expression, and chemokine expression. Eventually, when there is an excess of infiltrating monocytes into the brain the BBB is damaged with concomitant loss of tight junctions. At these stages, the BMEC might, in addition to the HIV-infected monocyte/macrophages, also function as instigators of the BBB loss and also contribute to the neurological complications.

## Acknowledgements

I would like to thank Jeena Middel for her indispensable help in realizing the figures and Leonie A Boven for critically reading the manuscript. Hans SLM Nottet is a fellow of the Royal Netherlands Academy of Sciences and Arts.

## References

- Arthur FW, Shivers RR, Bowman PD (1987). Astrocyte-mediated induction of tight junctions in brain capillary endothelium: an efficient in vitro model. *Dev Brain Res* **36**: 155–159.
- Balis FM, Pizzo PA, Butler KM, Hawkins ME, Brouwers P, Husson RN, Jacobsen F, Blaney SM, Gress J, Jarosinski P, Poplack DG (1992). Clinical pharmacology of 2',3'-dideoxyinosine in human immunodeficiency virus-infected children. *J Infect Dis* **165**: 99–104.
- Betz AL, Goldstein GW (1987). Polarity of the blood-brain barrier: neutral amino acid transport into isolated brain capillaries. *Science* **202**: 225–227.
- Boven LA, Gomes L, Hery C, Gray F, Verhoef J, Portegies P, Tardieu M, Nottet HSLM (1999a). Increased peroxynitrite activity in AIDS Dementia Complex: implications for the neuropathogenesis of HIV-1 infection. *J Immunol* **162**: 4319–4327.
- Boven LA, Middel J, Portegies P, Verhoef J, Jansen GH, Nottet HSLM (1999b). Overexpression of NGF and bFGF in AIDS dementia complex. *J Neuroimmunol* **97**: 154–162.
- Breitner JCS, Welsh KA, Helms MJ, Gaskell PC, Gau BA, Roses AD, Pericak-Vance MA, Saunders AM (1995). Delayed onset of Alzheimer's disease with non-steroidal anti-inflammatory and histamine H2 blocking drugs. *Neurobiol Aging* **16**: 523–530.
- Breitner JCS (1996). The role of anti-inflammatory drugs in the prevention and treatment of Alzheimer's disease. *Annu Rev Med* **47**: 401–411.
- Buhl R, Jaffe H, Holroyd K, Borok Z, Roum JH, Mastrangeli A, Wells FB, Kirby M, Saltini C, Crystal RG (1993). Activation of alveolar macrophages in asymptomatic HIV-infected individuals. *J Immunol* **150**: 1019–1028.
- Bukrinsky MI, Nottet HSLM, Schmidtayerova H, Dubrovsky L, Flanagan CR, Mullins ME, Lipton SA, Gendelman HE (1995). Regulation of nitric oxide synthase activity in human immunodeficiency virus type 1 (HIV-1)-infected monocytes: implications for HIV-associated neurological disease. *J Exp Med* **181**: 735–745.
- Butler KM, Husson RN, Balis FM, Brouwers P, Eddy J, El-Amin D, Gress J, Hawkins M, Jarosinski P, Moss H, Poplack D, Santacroce S, Venzon D, Winer L, Wolters P, Pizzo PA (1991). Dideoxyinosine in children with symptomatic human immunodeficiency virus infection. *N Engl J Med* **324**: 137–144.
- Chakrabarti L, Hurtrel M, Maire M-A, Vazeux R, Dormont D, Motgnier L, Hurtrel B (1991). Early viral replication in the brain of SIV-infected rhesus monkeys. *Am J Pathol* **139**: 1273–1280.



- Conant K, Garzino-Demo A, Nath A, McArthur JC, Halliday W, Power C, Gallo RC, Major EO (1998). Induction of monocyte chemoattractant protein-1 in HIV-1 tat-stimulated astrocytes and elevation in AIDS dementia. *Proc Natl Acad Sci USA* **95**: 3117–3121.
- Dhawan S, Toro LA, Jones E, Meltzer MS (1992). Interactions between HIV-infected monocytes and the extracellular matrix: HIV-infected monocytes secrete neutral metalloproteases that degrade basement membrane protein matrices. *J Leukoc Biol* **52**: 244–248.
- Dhawan S, Weeks BS, Soderland C, Schnaper HW, Toro LA, Asthana SP, Hewlett IK, Stetler-Stevenson WG, Yamada SS, Yamada KM, Melzer MS (1995). HIV-1 infection alters monocyte interactions with human microvascular endothelial cells. *J Immunol* **154**: 422–432.
- Davis LE, Hjelle BL, Miller VE, Palmer DL, Llewellyn AL, Merlin TL, Young SA, Mills RG, Wachsman W, Wiley CA (1992). Early viral brain invasion in iatrogenic human immunodeficiency virus infection. *Neurology* **42**: 1736–1739.
- DeBault LE, Cancilla PA (1980).  $\gamma$ -glutamyl transpeptidase in isolated brain endothelial cells: Induction by glial cells in vitro. *Science* **207**: 653–655.
- Gendelman HE, Orenstein JM, Baca LM, Weiser B, Burger H, Kalter DC, Meltzer MS (1989). The macrophage in the persistence and pathogenesis of HIV-1 infection. *AIDS* **3**: 475–495.
- Gendelman HE, Zeng J, Coulter CL, Ghorpade A, Che M, Thylin M, Rubocki R, Persidsky Y, Hahn F, Reinhard J, Swindells S (1998). Suppression of inflammatory neurotoxins by highly active antiretroviral therapy in human immunodeficiency virus-associated dementia. *J Inf Dis* **178**: 1000–1007.
- Gilles PN, Lathey JL, Spector SA (1995). Replication of macrophage-tropic and T-cell-tropic strains of human immunodeficiency virus type 1 is augmented by macrophage-endothelial contact. *J Virol* **69**: 2133–2139.
- Goldstein GW, Betz AL (1983). Recent advances in understanding brain capillary function. *Ann Neurol* **14**: 389–395.
- Goudsmit J, DeWolf F, Paul DA, Epstein LG, Lange JMA, Krone WJA, Speelman H, Wolters EC, van der Noordaa J, Oleske JM, van der Helm HJ, Coutinho RA (1986). Expression of human immunodeficiency virus antigen (HIV-Ag) in serum and cerebrospinal fluid during acute and chronic infection. *Lancet* **2**: 177–180.
- Hickey WF, Vass K, Lassman H (1992). Bone marrow derived elements in the central nervous system: an immunohistochemical and ultrastructural survey of rat chimera. *J Neuropathol Exp Neurol* **51**: 246–256.
- Ho DD, Rota TR, Schooly RT, Kaplan JC, Allan JD, Groopman JE, Resnick L, Felsenstein D, Andrews CA, Hirsch MS (1985). Isolation of HTLV-III from cerebrospinal fluid and neural tissue of patients with neurological syndromes related to the acquired immunodeficiency syndrome. *N Engl J Med* **313**: 1493–1497.
- Hofman FM, Wright AD, Dohadwala MM, Wong-Staal F, Walker SM (1993). Exogenous Tat protein activates human endothelial cells. *Blood* **92**: 2774–2780.
- Hollander H, Stringari S (1987). Human immunodeficiency virus-associated meningitis: Clinical course and correlations. *Am J Med* **83**: 813–816.
- Janzer RC, Raff MC (1987). Astrocytes induce blood–brain barrier properties in endothelial cells. *Nature* **325**: 253–258.
- Kiebburtz K and the Dana Consortium on the Therapy of HIV Dementia and Related Cognitive Disorders (1997). Safety and tolerability of the antioxidant OPC-14117 in HIV-associated cognitive impairment. *Neurology* **49**: 142–146.
- Kim JS, Chopp M, Gautain SC (1995). High dose methylprednisolone therapy reduces expression of JE/MCP-1 mRNA and macrophage accumulation in the ischemic rat brain. *J Neurol Sci* **128**: 28–35.
- Kim RB, Fromm MF, Wandel C, Leake B, Wood AJJ, Rodem DM, Wilkinson GR (1998). The drug transporter P-glycoprotein limits oral absorption and brain entry of HIV-1 protease inhibitors. *J Clin Invest* **101**: 289–294.
- Koenig S, Gendelman HE, Orenstein JM, Dal Canto MC, Pezeshkpour GH, Yungbluth M, Janotta F, Aksamit A, Martin MA, Fauci AS (1986). Detection of AIDS virus in macrophages in brain tissue from AIDS patients with encephalopathy. *Science* **233**: 1089–1093.
- Korber BTM, Kunstman KJ, Patterson BK, Furtado M, McEvilly MM, Levy R, Wolinsky SM (1994). Genetic differences between blood- and brain-derived viral sequences from human immunodeficiency virus type 1-infected patients: Evidence of conserved elements in the V3 region of the envelope protein of brain-derived sequences. *J Virol* **68**: 7467–7481.
- Lafrenie RM, Wahl LM, Epsteain JS, Hewlett IK, Yamada KM, Dhawan S (1996). HIV-1 tat modulates monocyte function and alters their interactions with microvessel endothelial cells: A mechanism of HIV pathogenesis. *J Immunol* **156**: 1638–1645.
- Lahdevirta J, Maury CPJ, Teppo AM, Repo H (1988). Elevated levels of circulating cachectin/tumor necrosis factor in patients with acquired immunodeficiency syndrome. *Am J Med* **85**: 289–291.
- Lawson LJ, Perry VH, Gordon S (1992). Turnover of resident microglia in the normal adult mouse brain. *Neuroscience* **48**: 405–415.
- Lee CG, Gottesman MM, Cardarelli CO, Ramachandra M, Jeang K, Ambudkar SV, Pastan I, Dey S (1998). HIV-1 protease inhibitors are substrates for the MDR1 multidrug transporter. *Biochemistry* **37**: 3594–3601.
- Li H, Newcombe J, Groome NP, Cuzner ML (1993). Characterization and distribution of phagocytic macrophages in multiple sclerosis plaques. *Neuropathol Appl Neurobiol* **19**: 214–223.
- Limoges J, Persidsky Y, Bock P, Gendelman HE (1997). Dexamethasone therapy worsens the neuropathology of human immunodeficiency virus type 1 encephalitis in SCID mice. *J Inf Dis* **175**: 1368–1381.
- Ling EA, Wong WC (1993). The origin and nature of ramified and amoeboid microglia: a historical review and current concepts. *Glia* **7**: 9–18.
- Masliah E, Achim CL, Ge N, DeTeresa R, Terry RD, Wiley CA (1992). Spectrum of human immunodeficiency virus-associated neocortical damage. *Ann Neurol* **32**: 321–329.
- Masliah E, Heaton RK, Marcotte TD, Ellis RJ, Wiley CA, Mallory M, Achim CL, McCutchan JA, Nelson JA, Atkinson JH, Grant I, the HNCRC Group (1997). Dendritic injury is a pathological substrate for human immunodeficiency virus-related cognitive disorders. *Ann Neurol* **42**: 963–972.

- McGeer PL, Itagaki S, Boyes BE, McGeer EG (1988a). Reactive microglia are positive for HLA-DR in the substantia nigra of Parkinson's and Alzheimer's disease brains. *Neurology* **38**: 1285–1291.
- McGeer PL, Itagaki S, McGeer EG (1988b). Expression of the histocompatibility glycoprotein HLA-DR in neurological disease. *Acta Neuropathol Berl* **76**: 550–557.
- Moses AV, Bloom FE, Pauza CD, Nelson JA (1993). HIV infection of human brain capillary endothelial cells occurs via a CD4/galactosylceramide-independent mechanism. *Proc Natl Acad Sci USA* **90**: 10474–10478.
- Muhleisen H, Gehrman J, Meyermann R (1995). Reactive microglia in Creutzfeldt-Jakob disease. *Neuropathol App. Neurobiol* **21**: 505–517.
- Nedergaard M (1994). Direct signaling from astrocytes to neurons in cultures of mammalian brain cells. *Science* **263**: 1768–1771.
- Norenberg MD (1994). Astrocyte responses to CNS injury. *J Neuropathol Exp Neurol* **53**: 213–220.
- Nottet HSLM, Bär DR, van Hassel H, Verhoef J, Boven LA (1997). Cellular aspects of HIV-1 infection of macrophages leading to neuronal injury in in-vitro models for HIV-1 encephalitis. *J Leukoc Biol* **62**: 107–116.
- Nottet HSLM, Dhawan S (1998). HIV-1 entry into brain: mechanisms for the infiltration of HIV-1 infected macrophages across the blood–brain barrier. In: *The Neurology of AIDS*. Gendelman HE, Lipton SA, Epstein LG, Swindells S (eds). Chapman & Hall: New York, pp 49–60.
- Nottet HSLM, Gendelman HE (1995a). Unravelling the neuroimmune mechanisms for the HIV-1-associated cognitive/motor complex. *Immunol Today* **16**: 441–448.
- Nottet HSLM, Jett M, Flanagan CR, Zhai Q-H, Persidsky Y, Rizzino A, Bernton EW, Genis P, Baldwin T, Schwartz J, LaBenz C, Gendelman HE (1995b). A regulatory role for astrocytes in HIV-1 encephalitis: an overexpression of eicosanoids, platelet-activating factor, and tumor necrosis factor- $\alpha$  by activated HIV-1-infected monocytes is attenuated by primary human astrocytes. *J Immunol* **154**: 3567–3581.
- Nottet HSLM, Persidsky Y, Sasseville VG, Nakuna AN, Bock P, Zhai Q-H, Sharer LR, McComb RD, Swindells S, Soderland C, Gendelman HE (1996). Mechanisms for the transendothelial migration of HIV-1-infected monocytes into brain. *J Immunol* **156**: 1284–1295.
- Pardridge WM (1983). Brain metabolism: A perspective from the blood–brain barrier. *Physiol Rev* **63**: 1481–1535.
- Pardridge WM, Eisenberg J, Yang J (1985). Human blood–brain barrier insulin receptor. *J Neurochem* **44**: 1771–1778.
- Parpura V, Basarsky TA, Liu F, Jettinija K, Jettinija S, Haydon PG (1994). Glutamate-mediated astrocyte-neuron signalling. *Nature* **369**: 744–747.
- Perno CF, Cooney DA, Gao WY, Hao Z, Johns DG, Foli A, Hartman NR, Calio R, Broder S, Yarchoan R (1992). Effects of bone marrow stimulatory cytokines on human immunodeficiency virus replication and the antiviral activity of dideoxynucleosides in cultures of monocyte/macrophages. *Blood* **80**: 995–1003.
- Perry VH, Anthony DC, Bolton SJ, Brown HC (1997). The blood–brain barrier and the inflammatory response. *Mol Med Today* **3**: 335–341.
- Persidsky Y, Stins M, Way D, Witte MH, Weinand M, Kim KS, Bock P, Gendelman HE, Fiala M (1997). A model for monocyte migration through the blood–brain barrier during HIV-1 encephalitis. *J Immunol* **158**: 3499–3510.
- Poland SD, Rice GPA, Dekaban GA (1995). HIV-1 infection of human brain-derived microvascular endothelial cells in vitro. *J Acquir Immune Defic Syndr Hum Retrov* **8**: 437–445.
- Portegies P, Enting RH, de Jong MD, Danner SA, Reiss P, Goudsmit J, Lange JM (1994). AIDS dementia complex and didanosine. *Lancet* **344**: 759.
- Pulliam L, Gascon R, Stubblebine M, McGuire D, McGrath MS (1997). Unique monocyte subset in patients with AIDS dementia. *Lancet* **349**: 692–695.
- Quagliarello VJ, Wispelwey B, Long Jr WJ, Scheld WM (1991). Recombinant human interleukin-1 induces meningitis and blood–brain barrier injury in the rat. Characterization and comparison with tumor necrosis factor. *J Clin Invest* **87**: 1360–1366.
- Rogers J, Kirby LC, Hempelman SR, Berry DL, McGeer PL, Kazniak AW, Zalinsky J, Cofield M, Mansukhani L, Willson P, Kogan F (1993). Clinical trial of indomethacin in Alzheimer's disease. *Neurology* **43**: 1609–1611.
- Sanders VJ, Pittman CA, White MG, Wang G, Wiley CA, Achim CL (1998). Chemokines and receptors in HIV encephalitis. *AIDS* **12**: 1021–1026.
- Sato K Kuratsu J, Takeshima H, Yoshimura T, Ushio Y (1995). Expression of monocyte chemoattractant protein-1 in meningioma. *J Neurosurg* **82**: 874–878.
- Schmidtmayerova H, Nottet HSLM, Nuovo G, Raabe T, Flanagan CR, Dubrovsky L, Gendelman HE, Cerami A, Bukrinsky MB, Sherry B (1996). HIV-1 infection alters chemokine  $\beta$  peptide expression in human monocytes: implications for recruitment of leukocytes into brain and lymph nodes. *Proc Natl Acad Sci USA* **93**: 700–704.
- Seilhean D, Duyckaerts C, Vazeux R, Bolgert F, Brunet P, Katlama C, Gentilini M, Hauw JJ (1993). HIV-1 associated cognitive/motor complex: absence of neuronal loss in the cerebral neocortex. *Neurology* **43**: 1492–1499.
- Sharer LR, Michaels J, Murphey-Corb M, Hu F-S, Kuebler DJ, Martin LN, Baskin GB (1991). Serial pathogenesis study of SIV brain infection. *J Med Primatol* **20**: 211–217.
- Sharpless NE, O'Brien WA, Verdin E, Kufta CV, Chen ISY, Dubois-Dalcq M (1992). Human immunodeficiency virus type 1 tropism for brain microglial cells is determined by a region of the env glycoprotein that controls macrophage tropism. *J Virol* **66**: 2588–2593.
- Sidtis JJ, Gatsonis C, Price RW, Singer EJ, Collier AC, Richman DD, Hirsch MS, Schaerf FW, Fischl MA, Kiebertz K, Simpson D, Koch MA, Feinberg J, Dafni Y (1993). Zidovudine treatment of the AIDS dementia complex: results of a placebo-controlled trial, AIDS Clinical Trials Group. *Ann Neurol* **33**: 343–349.
- Smits HA, van Muiswinkel FL, de Vos NM, Nottet HSLM (1999). The amyloid- $\beta$  (1-42)-induced respiratory burst of primary human macrophages is enhanced in the presence of amyloid- $\beta$  (25-35). In: *Alzheimer's disease and related disorders: etiology, pathogenesis and therapeutics*. Iqbal K, Swaab DF, Winblad B, Wisniewski HM, (eds). John Wiley & Sons: England, pp 457–461.

- Soontornniyomkij V, Wang G, Pittman CA, Wiley CA, Achim CL (1998). Expression of brain-derived neurotrophic factor protein in activated microglia of HIV-1 encephalitis. *Neuropathol Appl Neurobiol* **24**: 453–460.
- Sporer B, Paul R, Koedel U, Grimm R, Wick M, Goebel FD, Pfister H (1998). Presence of matrix metalloproteinase-9 activity in the cerebrospinal fluid of human immunodeficiency virus-infected patients. *J Inf Dis* **178**: 854–857.
- Stewart PA, Wiley MJ (1981). Developing nervous system induced formation of blood–brain barrier characteristics invading endothelial cells: A study using quail-chick transplantation chimeras. *Dev Biol* **84**: 183–192.
- Takehima H, Kuratsu J, Takeya M, Yoshimura T, Ushio Y (1994). Expression and localization of messenger RNA and protein for monocyte chemoattractant protein-1 in human malignant glioma. *J Neurosurg* **80**: 1056–1062.
- Van Muiswinkel FL, Raupp SFA, de Vos NM, Smits HA, Verhoef J, Eikelenboom P, Nottet HSLM (1999). The amino-terminus of the amyloid- $\beta$  peptide is critical for cellular binding and consequent activation of the respiratory burst of human macrophages. *J Neuroimmunol* **96**: 121–130.
- Varki A (1994). Selectin ligands. *Proc Natl Acad Sci USA* **91**: 7390–7397.
- Vazeux R, Brousse N, Jarry A, Henin D, Marche C, Vedrenne C, Mikol J, Wolff M, Michon C, Rozenbaum W, Bureau JF, Montagnier L, Brahic M (1987). AIDS subacute encephalitis. Identification of HIV-infected cells. *Am J Pathol* **126**: 403–410.
- Wahl SM, Allen JB, McCartney-Francis N, Morganti-Kossmann MC, Kossmann T, Ellingsworth L, Mai UE, Mergenhagen SE, Orenstein JM (1991). Macrophage- and astrocyte-derived transforming growth factor- $\beta$  as a mediator of central nervous system dysfunction in acquired immune deficiency syndrome. *J Exp Med* **173**: 981–991.
- Wei X, Ghosh SK, Taylor ME, Johnson VA, Emini EA, Deutsch P, Lifson JD, Bonhoeffer S, Nowak MA, Hahn BH, Saag MS, Shaw GM (1995). Viral dynamics in human immunodeficiency virus type 1 infection. *Nature* **373**: 117–122.
- Weiss JM, Downie SA, Lyman WD, Berman JW (1998). Astrocyte-derived monocyte-chemoattractant protein-1 directs the transmigration of leukocytes across a model of the human blood–brain barrier. *J Immunol* **161**: 6896–6903.
- Wiley CA, Schrier RD, Nelson JA, Lampert PW, Oldstone MB (1986). Cellular localization of human immunodeficiency virus infection within the brains of acquired immune deficiency syndrome patients. *Proc Natl Acad Sci USA* **83**: 7089–7093.
- Zhu T, Mo H, Wang N, Nam DS, Cao Y, Koup RA, Ho DD (1993). Genotypic and phenotypic characterisation of HIV-1 in patients with primary infection. *Science* **261**: 1179–1181.